



High vacuum chamber, horizontal, KHH, DN 600



PFEIFFER 

High vacuum chamber

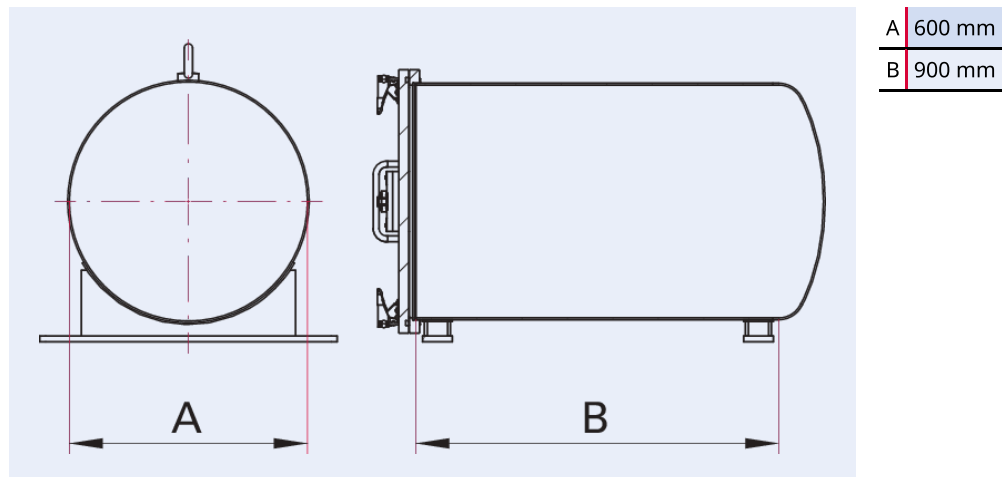


Illustration only

High vacuum chamber, horizontal, KHH, DN 600

- Cylindrical, horizontal body, one side welded dished end
- Stainless steel door with hinges and quick clamps to prestress the FKM-door seal
- Surface: inside and outside glass bead blasted
- Chamber with feet and ring bolts
- Chamber ports available (accessories)

Dimensions



Technical Data	High vacuum chamber, horizontal, KHH, DN 600
Temperature range	15 – 150 °C
Tightness	$<1 \cdot 10^{-9}$ Pa m ³ /s $<7.5 \cdot 10^{-9}$ Torr l/s $<1 \cdot 10^{-8}$ mbar l/s
Connection flange	DN 600
Pressure range	$1 \cdot 10^{-7}$ hPa – to ambient pressure
Material	Chamber body and door made from stainless steel 304 (1.4301)
Temperature range max.	150 °C 302 °F 423.15 K
Temperature range min.	15 °C 5 °F 258.15 K

Order number	High vacuum chamber, horizontal, KHH, DN 600
High vacuum chamber, horizontal, KHH, DN 600	820KHH0600-900

Are you looking for an optimum vacuum solution?
Talk to us:
Pfeiffer Vacuum Components & Solutions GmbH Germany
T +49 551 99963-0
info-cs@pfeiffer-vacuum.com

Or scan the barcode, to visit our web page:



<https://webportal.pfeiffer-vacuum.com/global/en/contact>



Errors and/or changes excepted. - 5/14/2025

Follow Us On Social Media
#pfeiffervacuum



www.pfeiffer-vacuum.com

PFEIFFER 