



# High vacuum chamber, horizontal, KHH, DN 500

---



**PFEIFFER** 

# High vacuum chamber

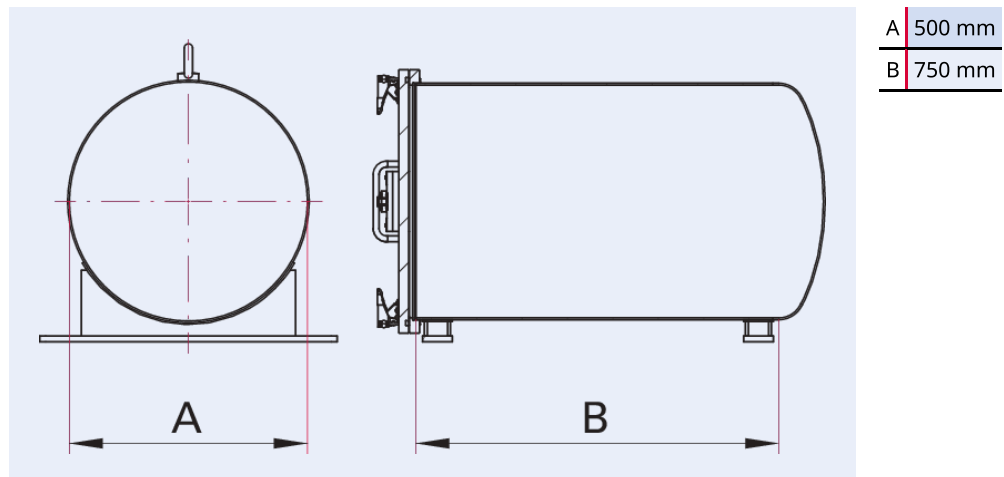


Illustration only

## High vacuum chamber, horizontal, KHH, DN 500

- Cylindrical, horizontal body, one side welded dished end
- Stainless steel door with hinges and quick clamps to prestress the FKM-door seal
- Surface: inside and outside glass bead blasted
- Chamber with feet and ring bolts
- Chamber ports available (accessories)

## Dimensions



Technical Data	High vacuum chamber, horizontal, KHH, DN 500
Temperature range	15 – 150 °C
Tightness	$<1 \cdot 10^{-9}$ Pa m <sup>3</sup> /s   $<7.5 \cdot 10^{-9}$ Torr l/s   $<1 \cdot 10^{-8}$ mbar l/s
Connection flange	DN 500
Pressure range	$1 \cdot 10^{-7}$ hPa – to ambient pressure
Material	Chamber body and door made from stainless steel 304 (1.4301)
Temperature range max.	150 °C   302 °F   423.15 K
Temperature range min.	15 °C   5 °F   258.15 K

Order number	High vacuum chamber, horizontal, KHH, DN 500
High vacuum chamber, horizontal, KHH, DN 500	820KHH0500-750

Are you looking for an optimum vacuum solution?  
Talk to us:  
**Pfeiffer Vacuum Components & Solutions GmbH Germany**  
**T +49 551 99963-0**  
**info-cs@pfeiffer-vacuum.com**

Or scan the barcode, to visit our web page:



<https://webportal.pfeiffer-vacuum.com/global/en/contact>



Errors and/or changes excepted. - 5/14/2025

Follow Us On Social Media  
#pfeiffervacuum



[www.pfeiffer-vacuum.com](http://www.pfeiffer-vacuum.com)

**PFEIFFER** 