



High vacuum chamber, horizontal, KHH, DN 400



PFEIFFER 

High vacuum chamber

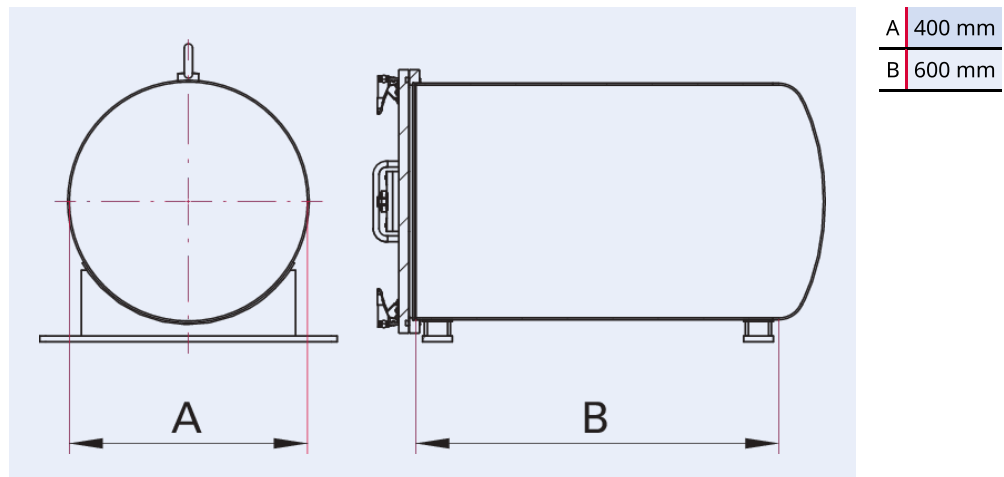


Illustration only

High vacuum chamber, horizontal, KHH, DN 400

- Cylindrical, horizontal body, one side welded dished end
- Stainless steel door with hinges and quick clamps to prestress the FKM-door seal
- Surface: inside and outside glass bead blasted
- Chamber with feet and ring bolts
- Chamber ports available (accessories)

Dimensions



| Technical Data | High vacuum chamber, horizontal, KHH, DN 400 |
|------------------------|---|
| Temperature range | 15 – 150 °C |
| Tightness | $<1 \cdot 10^{-9}$ Pa m ³ /s $<7.5 \cdot 10^{-9}$ Torr l/s $<1 \cdot 10^{-8}$ mbar l/s |
| Connection flange | DN 400 |
| Pressure range | $1 \cdot 10^{-7}$ hPa – to ambient pressure |
| Material | Chamber body and door made from stainless steel 304 (1.4301) |
| Temperature range max. | 150 °C 302 °F 423.15 K |
| Temperature range min. | 15 °C 5 °F 258.15 K |

| Order number | High vacuum chamber, horizontal, KHH, DN 400 |
|--|--|
| High vacuum chamber, horizontal, KHH, DN 400 | 820KHH0400-600 |

Are you looking for an optimum vacuum solution?
Talk to us:
Pfeiffer Vacuum Components & Solutions GmbH Germany
T +49 551 99963-0
info-cs@pfeiffer-vacuum.com

Or scan the barcode, to visit our web page:



<https://webportal.pfeiffer-vacuum.com/global/en/contact>



Errors and/or changes excepted. - 5/14/2025

Follow Us On Social Media
#pfeiffervacuum



www.pfeiffer-vacuum.com

PFEIFFER 