

**Electrical feedthrough,  
1 kV, 25 A, 2 pins,  
DN 40 CF**

---



**PFEIFFER** 

# Electrical feedthrough

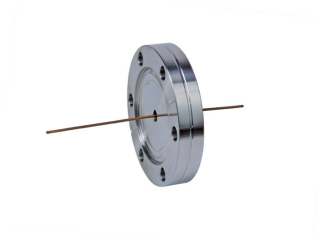
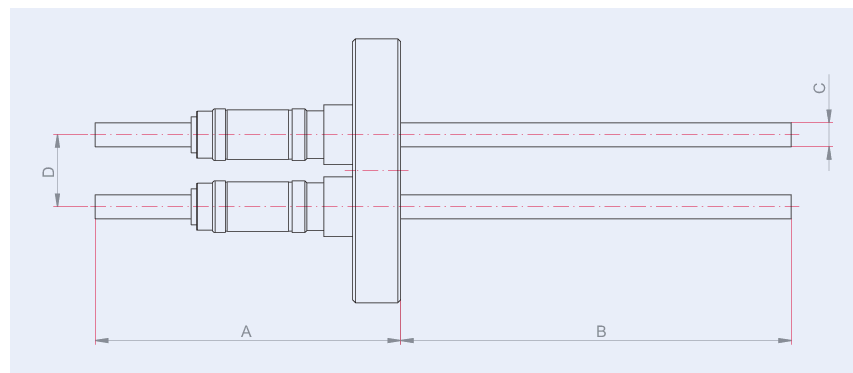


Illustration only

## Electrical feedthrough, 1 kV, 25 A, 2 pins, DN 40 CF

- Flange material: Stainless steel
- Conductor material: copper
- Conductor material stainless steel, molybdenum, nickel on request
- The specified voltages and currents refer to the following ambient conditions:  
room temperature, outside: dry air, inside: vacuum  $< 1 \cdot 10^{-4}$  hPa

## Dimensions



A	55 mm
B	46 mm
C	1.3 mm

Technical Data	Electrical feedthrough, 1 kV, 25 A, 2 pins, DN 40 CF
Materials in contact with media	Flange: Stainless steel, Conductor: Copper
Temperature range (vacuum side)	100 – 300 °C
Tightness	1 · 10 <sup>-11</sup> Pa m <sup>3</sup> /s   7.5 · 10 <sup>-11</sup> Torr l/s   1 · 10 <sup>-10</sup> mbar l/s
Heat up and cool down rate	≤20 K/min
Feedthrough voltage	1 kV DC
Current	25 A
Pins	2
Connection flange	DN 40 CF
Pressure range	1 · 10 <sup>-11</sup> hPa – to ambient pressure

Order number	Electrical feedthrough, 1 kV, 25 A, 2 pins, DN 40 CF
Electrical feedthrough, 1 kV, 25 A, 2 pins, DN 40 CF	420XST040-1-20-2

Are you looking for an optimum vacuum solution?  
Talk to us:  
**Pfeiffer Vacuum Components & Solutions GmbH Germany**  
**T +49 551 99963-0**  
**info-cs@pfeiffer-vacuum.com**

Or scan the barcode, to visit our web page:



<https://webportal.pfeiffer-vacuum.com/global/en/contact>



Errors and/or changes excepted. - 5/14/2025

Follow Us On Social Media  
#pfeiffervacuum



[www.pfeiffer-vacuum.com](http://www.pfeiffer-vacuum.com)

**PFEIFFER** 