

**Fluid feedthrough,
double tube, stainless
steel, DN 40 CF**



PFEIFFER 

Fluid feedthrough, double tube

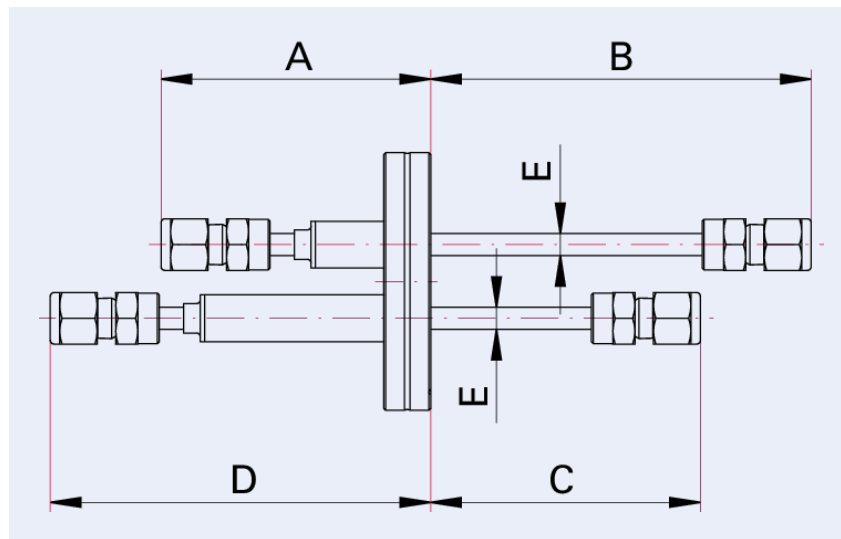


Illustration only

Fluid feedthrough, double tube, stainless steel, DN 40 CF

- Flange-tube connection: Thermally insulated tube
- Flange material: Stainless steel
- Suitable for liquid nitrogen
- S = Swagelok® fitting 6 mm

Dimensions



A	73 mm
B	103 mm
C	73 mm
D	103 mm
E	6 mm

Technical Data	Fluid feedthrough, double tube, stainless steel, DN 40 CF
Materials in contact with media	Stainless steel
Temperature range (vacuum side)	196 – 300 °C
Vacuum side	S
Atmosphere side	S
Tightness	$1 \cdot 10^{-11}$ Pa m ³ /s $7.5 \cdot 10^{-11}$ Torr l/s $1 \cdot 10^{-10}$ mbar l/s
Connection flange	DN 40 CF
Pressure range	$1 \cdot 10^{-11}$ hPa – $1.5 \cdot 10^3$ hPa over pressure

Order number	Fluid feedthrough, double tube, stainless steel, DN 40 CF
Fluid feedthrough, double tube, stainless steel, DN 40 CF	420XFN040-2-SS

Are you looking for an optimum vacuum solution?
Talk to us:
Pfeiffer Vacuum Components & Solutions GmbH Germany
T +49 551 99963-0
info-cs@pfeiffer-vacuum.com

Or scan the barcode, to visit our web page:



<https://webportal.pfeiffer-vacuum.com/global/en/contact>



Errors and/or changes excepted. - 5/14/2025

Follow Us On Social Media
#pfeiffervacuum



www.pfeiffer-vacuum.com

PFEIFFER 