



PFEIFFER 

CF shutter, Manual

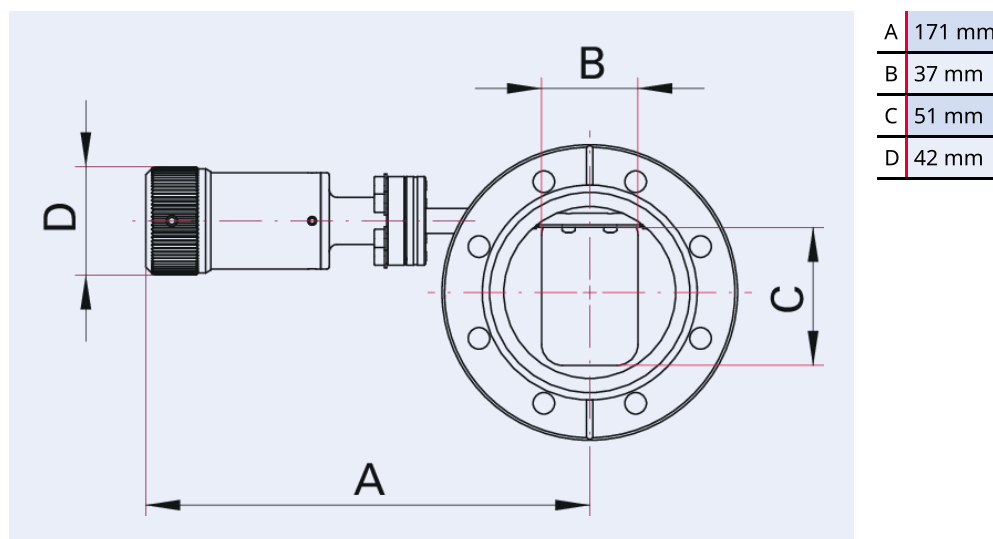


Illustration only

CF shutter, manually actuated, stainless steel, DN 63 CF

- Handwheel with snap-in stages
- Feedthrough, bellows-sealed
- Hermetically sealed, suitable for UHV

Dimensions



Technical Data	CF shutter, manually actuated, stainless steel, DN 63 CF
Materials in contact with media	Stainless steel
Number of screws	8 Pieces
Angle of rotation	0 to 90°, with snap-in stages in 10° increments
Operating temperature	≤ 80 °C
Mounting orientation	Arbitrary
Tightness	$<1 \cdot 10^{-11}$ Pa m ³ /s $<7.5 \cdot 10^{-11}$ Torr l/s $<1 \cdot 10^{-10}$ mbar l/s
Connection flange	DN 63 CF
Pressure range	$1 \cdot 10^{-9}$ hPa – to ambient pressure

Order number	CF shutter, manually actuated, stainless steel, DN 63 CF
CF shutter, manually actuated, stainless steel, DN 63 CF	420MBL063

Are you looking for an optimum vacuum solution?
Talk to us:
Pfeiffer Vacuum Components & Solutions GmbH Germany
T +49 551 99963-0
info-cs@pfeiffer-vacuum.com

Or scan the barcode, to visit our web page:



<https://webportal.pfeiffer-vacuum.com/global/en/contact>



Errors and/or changes excepted. - 5/14/2025

Follow Us On Social Media
#pfeiffervacuum



www.pfeiffer-vacuum.com

PFEIFFER 