

**CF shutter, pneumatic,
stainless steel,
DN 40 CF**



PFEIFFER 

CF shutter, Pneumatic

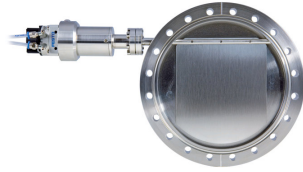
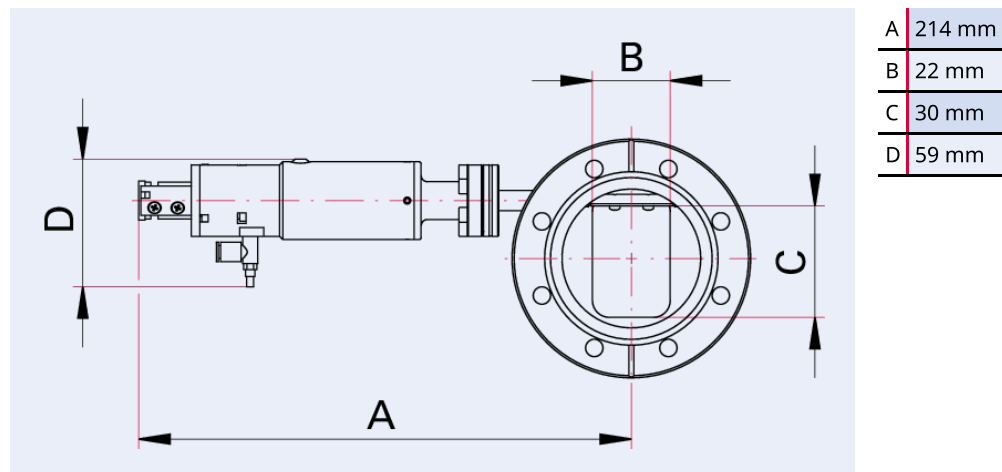


Illustration only

CF shutter, pneumatic, stainless steel, DN 40 CF

- Hermetically sealed, suitable for UHV
- Feedthrough, bellows-sealed
- Pneumatically operated, double-acting
- Opening and closing speed adjustable

Dimensions



Technical Data

CF shutter, pneumatic, stainless steel, DN 40 CF	
Materials in contact with media	Stainless steel
Number of screws	6 Pieces
Angle of rotation	0 to 90° (final position adjustable)
Mounting orientation	Arbitrary
Tightness	$<1 \cdot 10^{-11} \text{ Pa m}^3/\text{s}$ $<7.5 \cdot 10^{-11} \text{ Torr l/s}$ $<1 \cdot 10^{-10} \text{ mbar l/s}$
Connection flange	DN 40 CF
Pressure range	$1 \cdot 10^{-9} \text{ hPa}$ – to ambient pressure
Compressed air (overpressure)	1500 – 7000 hPa
Connection	(Compressed air) 4 mm hose connection

Order number	CF shutter, pneumatic, stainless steel, DN 40 CF
CF shutter, pneumatic, stainless steel, DN 40 CF	420MBL040-p

Are you looking for an optimum vacuum solution?
Talk to us:
Pfeiffer Vacuum Components & Solutions GmbH Germany
T +49 551 99963-0
info-cs@pfeiffer-vacuum.com

Or scan the barcode, to visit our web page:



<https://webportal.pfeiffer-vacuum.com/global/en/contact>



Errors and/or changes excepted. - 5/14/2025

Follow Us On Social Media
#pfeiffervacuum



www.pfeiffer-vacuum.com

PFEIFFER 