



**Viewport, stainless  
steel / fused silica, UV,  
DN 40 CF**

---



**PFEIFFER** 

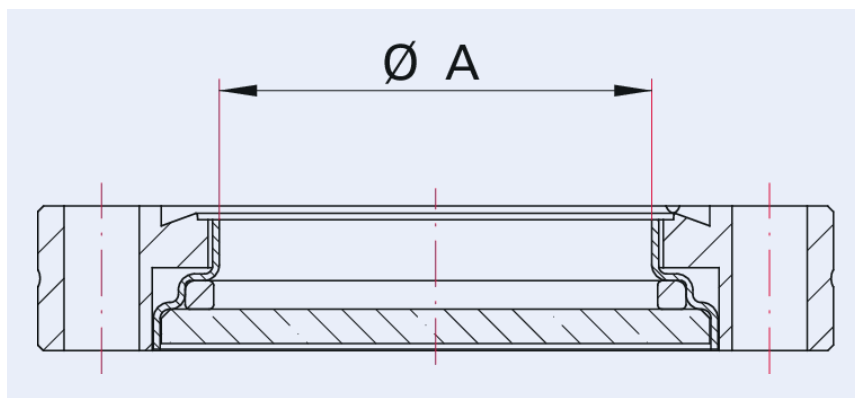


Illustration only

## Viewport, stainless steel / fused silica, UV, DN 40 CF

- Please use annealed copper gaskets or elastomer seals to minimize stress inside the glass
- Always use washers for installation
- Flange sizes DN 16 to DN 250 compatible with ISO 3669:2020
- Caution! Risk of injury by glass splinters. Do not use viewports which show apparent damage

## Dimensions



A 36 mm

Technical Data	Viewport, stainless steel / fused silica, UV, DN 40 CF
Temperature range	100 – 200 °C
Heat up and cool down rate	≤20 K/min
Connection flange	DN 40 CF
Pressure range	$1 \cdot 10^{-11}$ hPa – to ambient pressure
Material	Stainless steel / Fused Silica (Synthetic Amorphous Quartz)
Temperature range max.	200 °C   392 °F   473.15 K
Temperature range min.	100 °C   148 °F   173.15 K

Order number	Viewport, stainless steel / fused silica, UV, DN 40 CF
Viewport, stainless steel / fused silica, UV, DN 40 CF	420GSG040-silica-uv

Are you looking for an optimum vacuum solution?  
Talk to us:  
**Pfeiffer Vacuum Components & Solutions GmbH Germany**  
**T +49 551 99963-0**  
**info-cs@pfeiffer-vacuum.com**

Or scan the barcode, to visit our web page:



<https://webportal.pfeiffer-vacuum.com/global/en/contact>



Errors and/or changes excepted. - 5/14/2025

Follow Us On Social Media  
#pfeiffervacuum



[www.pfeiffer-vacuum.com](http://www.pfeiffer-vacuum.com)

**PFEIFFER** 