



PFEIFFER 

Half nipple, rotatable

PFEIFFER 

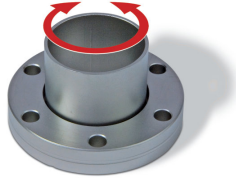
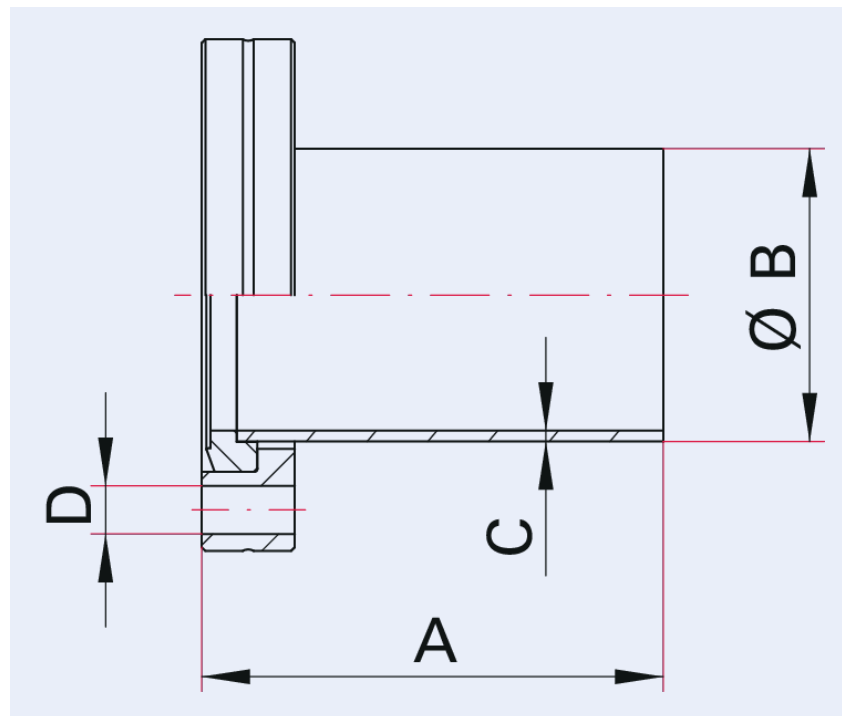


Illustration only

Half nipple, rotatable with thread, stainless steel, DN 63 CF

- Pipe surface: glass-bead blasted (polished version on request)
- Other flange and tube materials on request
- Other pipe dimensions on request

Dimensions



A	105 mm
B	70 mm
C	2 mm
D	M8

Technical Data	Half nipple, rotatable with thread, stainless steel, DN 63 CF
Pipe dimension	70 mm × 2 mm
Thread	M 8
Temperature range	196 – 300 °C
Tightness	1 · 10 ⁻¹¹ Pa m ³ /s 7.5 · 10 ⁻¹¹ Torr l/s 1 · 10 ⁻¹⁰ mbar l/s
Connection flange	DN 63 CF
Pressure range	1 · 10 ⁻¹² hPa – to ambient pressure
Material	Flange: stainless steel 304L; tube: stainless steel 304L or better
Temperature range max.	300 °C 572 °F 573.15 K
Temperature range min.	196 °C 320.8 °F 77.15 K

Order number	Half nipple, rotatable with thread, stainless steel, DN 63 CF
Half nipple, rotatable with thread, stainless steel, DN 63 CF	420FRD063-70-105-G

Are you looking for an optimum vacuum solution?
Talk to us:
Pfeiffer Vacuum Components & Solutions GmbH Germany
T +49 551 99963-0
info-cs@pfeiffer-vacuum.com

Or scan the barcode, to visit our web page:



<https://webportal.pfeiffer-vacuum.com/global/en/contact>



Errors and/or changes excepted. - 5/14/2025

Follow Us On Social Media
#pfeiffervacuum



www.pfeiffer-vacuum.com

PFEIFFER 