



VCR-adapter, male and female, DN 40 CF



PFEIFFER 

VCR Adapter, male

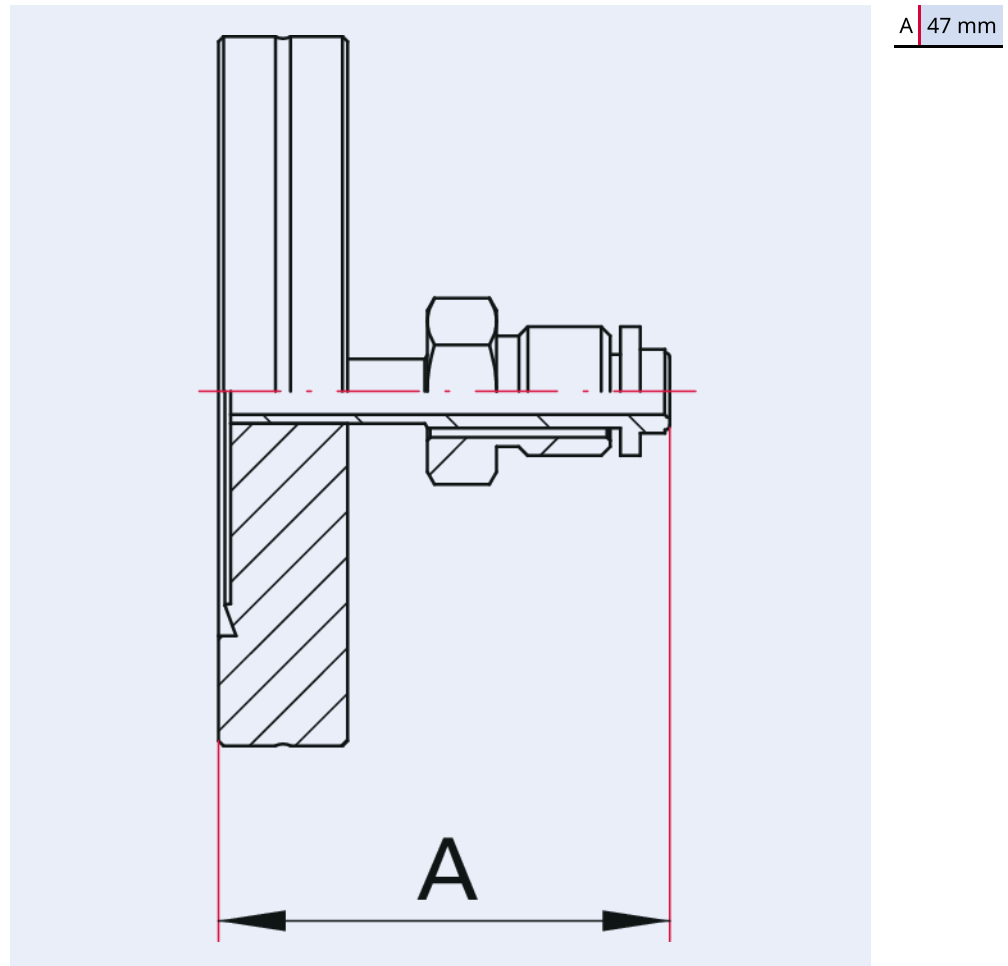


Illustration only

VCR-adapter, male and female, DN 40 CF

- Original Swagelok® VCR-Adapter
- Other flange sizes and VCR adapters on request

Dimensions



Technical Data	VCR-adapter, male and female, DN 40 CF
VCR connection	1/2"
Temperature range	196 – 300 °C
Tightness	$<1 \cdot 10^{-11}$ Pa m ³ /s $<7.5 \cdot 10^{-11}$ Torr l/s $<1 \cdot 10^{-10}$ mbar l/s
Connection flange	DN 40 CF / G 1/2" VCR
Pressure range	$1 \cdot 10^{-11}$ hPa – to ambient pressure
Material	Flange: stainless steel 304L; VCR adapter: 1.4404/316L
Temperature range max.	300 °C 572 °F 573.15 K
Temperature range min.	196 °C 320.8 °F 77.15 K

Order number	VCR-adapter, male and female, DN 40 CF
VCR-adapter, male and female, DN 40 CF	420AVM040-0500

Are you looking for an optimum vacuum solution?
Talk to us:
Pfeiffer Vacuum Components & Solutions GmbH Germany
T +49 551 99963-0
info-cs@pfeiffer-vacuum.com

Or scan the barcode, to visit our web page:



<https://webportal.pfeiffer-vacuum.com/global/en/contact>



Errors and/or changes excepted. - 5/14/2025

Follow Us On Social Media
#pfeiffervacuum



www.pfeiffer-vacuum.com

PFEIFFER 