



**PFEIFFER** 

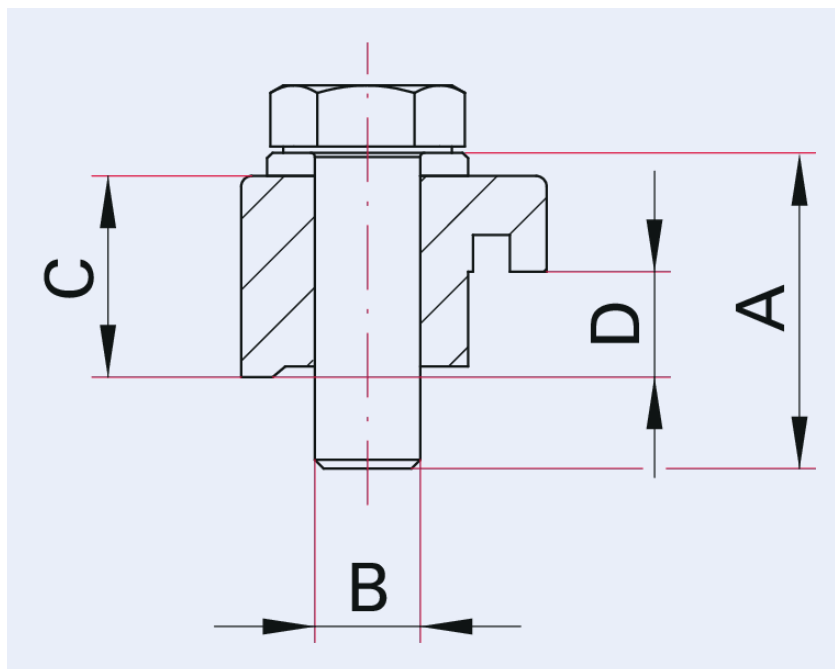


Illustration only

## Claw clamp for base plate with sealing groove, zinc-plated steel, DN 320-500 ISO-K

- Suitable for use with metal and elastomer seals
- For installing an ISO-K flange on a base plate with O-ring groove
- If there is no O-ring groove, please use the longer single claw clamps (BPR)
- Not to be used for the installation of turbo pumps! Use the fastening elements given in the corresponding operating instructions.

## Dimensions



A	45 mm
B	M12
C	31 mm
D	15.4 mm

Technical Data	Claw clamp for base plate with sealing groove, zinc-plated steel, DN 320-500 ISO-K
Temperature range	0 – 200 °C
Connection flange	DN 320 ISO-K
Material	Zinc-plated steel
Temperature range max.	200 °C   392 °F   473.15 K
Temperature range min.	0 °C   32 °F   273.15 K

Order number	Claw clamp for base plate with sealing groove, zinc-plated steel, DN 320-500 ISO-K
Claw clamp for base plate with sealing groove, zinc-plated steel, DN 320-500 ISO-K	350BPD500

Are you looking for an optimum vacuum solution?  
Talk to us:  
**Pfeiffer Vacuum Components & Solutions GmbH Germany**  
**T +49 551 99963-0**  
**info-cs@pfeiffer-vacuum.com**

Or scan the barcode, to visit our web page:



<https://webportal.pfeiffer-vacuum.com/global/en/contact>



Errors and/or changes excepted. - 5/14/2025

Follow Us On Social Media  
#pfeiffervacuum



[www.pfeiffer-vacuum.com](http://www.pfeiffer-vacuum.com)

**PFEIFFER** 