

Bracket screw, stainless steel 316/1.4401, DN 320-500 ISO-K



PFEIFFER 

Bracket screw

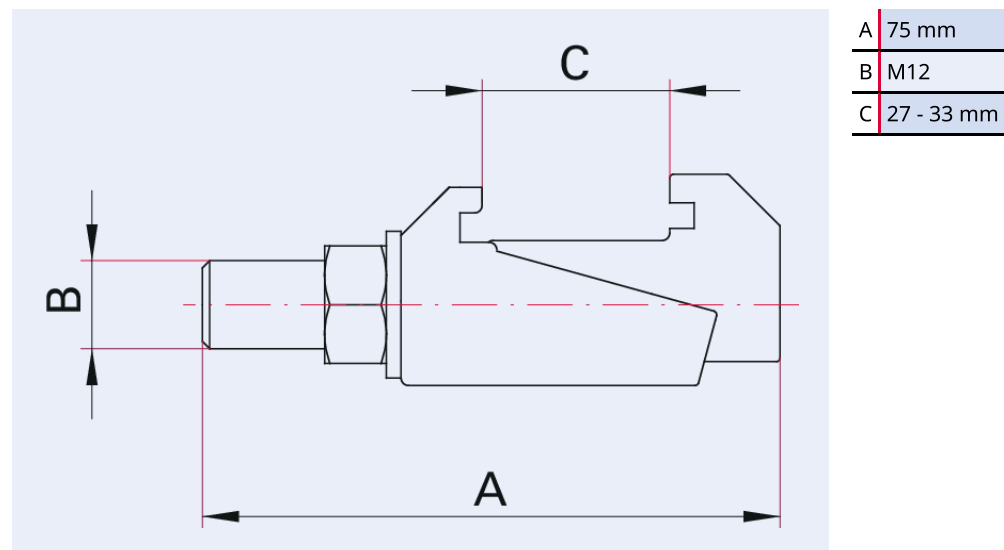


Illustration only

Bracket screw, stainless steel 316/1.4401, DN 320-500 ISO-K

- Suitable for use with metal and elastomer seals
- For stainless steel bracket screws, we recommend using thread lubricant
- Not to be used for the installation of turbo pumps! Use the fastening elements given in the corresponding operating instructions.

Dimensions



Technical Data

	Bracket screw, stainless steel 316/1.4401, DN 320-500 ISO-K
Materials in contact with media	Stainless steel 1.4404 (AISI 316L)
Temperature range	196 – 300 °C
Connection flange	DN 320 ISO-K
Torque	DN 63 – 250: 20 N m – 26 N m DN 320 – 630: –
Temperature range max.	300 °C 572 °F 573.15 K
Temperature range min.	196 °C 320.8 °F 77.15 K

Order number	Bracket screw, stainless steel 316/1.4401, DN 320-500 ISO-K
Bracket screw, stainless steel 316/1.4401, DN 320-500 ISO-K	320BKL500

Are you looking for an optimum vacuum solution?
Talk to us:
Pfeiffer Vacuum Components & Solutions GmbH Germany
T +49 551 99963-0
info-cs@pfeiffer-vacuum.com

Or scan the barcode, to visit our web page:



<https://webportal.pfeiffer-vacuum.com/global/en/contact>



Errors and/or changes excepted. - 5/14/2025

Follow Us On Social Media
#pfeiffervacuum



www.pfeiffer-vacuum.com

PFEIFFER 