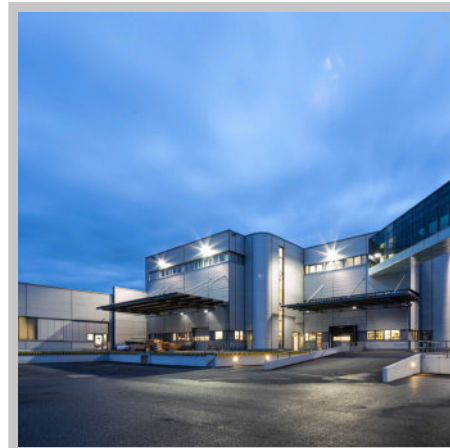




**Glass flange, quartz  
glass, DN 16 ISO-KF**

---



**PFEIFFER** 

# Glass blank flange

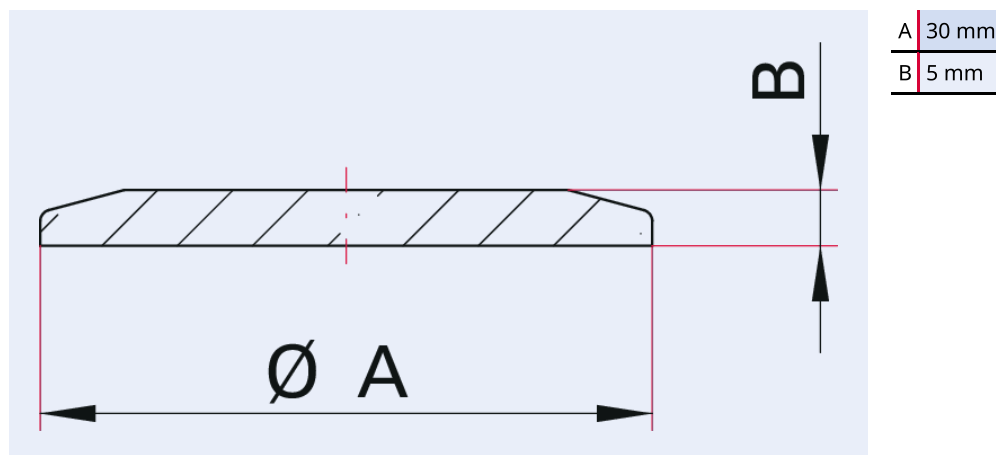


Illustration only

## Glass flange, quartz glass, DN 16 ISO-KF

- Installation with outer centering ring and elastomer seal
- Fastening elements: Clamping ring made from plastic (no usage of metal connection elements)
- Caution! Risk of injury by glass splinters. Do not use viewports which show apparent damage

## Dimensions



## Technical Data

Glass flange, quartz glass, DN 16 ISO-KF	
Materials in contact with media	Quartz glass
Temperature range	15 – 200 °C
Heat up and cool down rate	≤5 K/min
Connection flange	DN 16 ISO-KF
Pressure range	1 · 10 <sup>-8</sup> hPa – 5 · 10 <sup>2</sup> hPa over pressure
Temperature range max.	200 °C   392 °F   473.15 K
Temperature range min.	15 °C   5 °F   258.15 K

Order number	Glass flange, quartz glass, DN 16 ISO-KF
Glass flange, quartz glass, DN 16 ISO-KF	180FBL016

Are you looking for an optimum vacuum solution?  
Talk to us:  
**Pfeiffer Vacuum Components & Solutions GmbH Germany**  
**T +49 551 99963-0**  
**info-cs@pfeiffer-vacuum.com**

Or scan the barcode, to visit our web page:



<https://webportal.pfeiffer-vacuum.com/global/en/contact>



Errors and/or changes excepted. - 5/14/2025

Follow Us On Social Media  
#pfeiffervacuum



[www.pfeiffer-vacuum.com](http://www.pfeiffer-vacuum.com)

**PFEIFFER** 