



**Bellows with weld ends,  
stainless steel 316L,  
DN 50 ISO-KF**

---



**PFEIFFER** 

# Spring bellows with weld ends

PFEIFFER 

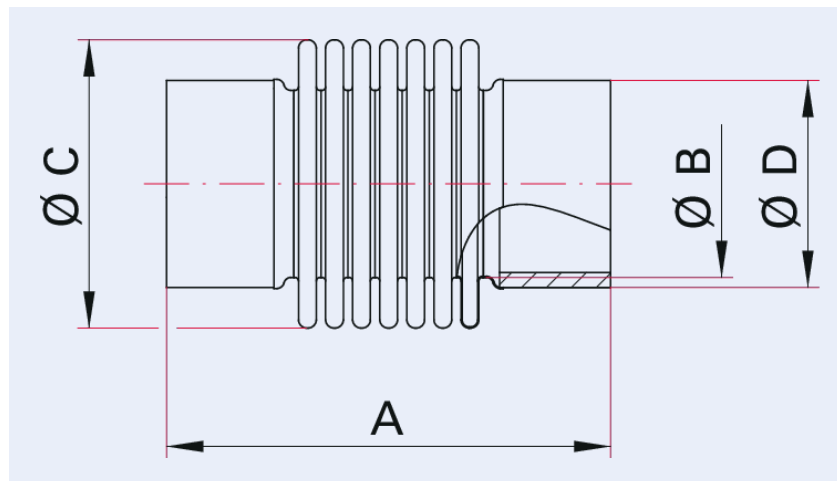


Illustration only

## Bellows with weld ends, stainless steel 316L, DN 50 ISO-KF

- Length of pipe end: 15 mm
- Wall thickness of pipe end: 2 mm
- Custom lengths on request

## Dimensions



A	120 mm
B	50 mm
C	69 mm
D	54 mm

Technical Data	Bellows with weld ends, stainless steel 316L, DN 50 ISO-KF
Materials in contact with media	Stainless steel (AISI 316L)
Temperature range	196 – 300 °C
Axial stroke	±19.5 mm   ±0.77 inch
Tightness	1 · 10 <sup>-11</sup> Pa m <sup>3</sup> /s   7.5 · 10 <sup>-11</sup> Torr l/s   1 · 10 <sup>-10</sup> mbar l/s
Connection flange	DN 50 ISO-KF
Pressure range	1 · 10 <sup>-8</sup> hPa – 5 · 10 <sup>2</sup> hPa over pressure
Temperature range max.	300 °C   572 °F   573.15 K
Temperature range min.	196 °C   320.8 °F   77.15 K

Order number	Bellows with weld ends, stainless steel 316L, DN 50 ISO-KF
Bellows with weld ends, stainless steel 316L, DN 50 ISO-KF	170SFA050-120

Are you looking for an optimum vacuum solution?  
Talk to us:  
**Pfeiffer Vacuum Components & Solutions GmbH Germany**  
**T +49 551 99963-0**  
**info-cs@pfeiffer-vacuum.com**

Or scan the barcode, to visit our web page:



<https://webportal.pfeiffer-vacuum.com/global/en/contact>



Errors and/or changes excepted. - 5/14/2025

Follow Us On Social Media  
#pfeiffervacuum



[www.pfeiffer-vacuum.com](http://www.pfeiffer-vacuum.com)

**PFEIFFER** 