



**Venting valve,
manually actuated,
brass, nickel-plated,
DN 10 KF**



PFEIFFER 

Venting valve, manually actuated

PFEIFFER ➤

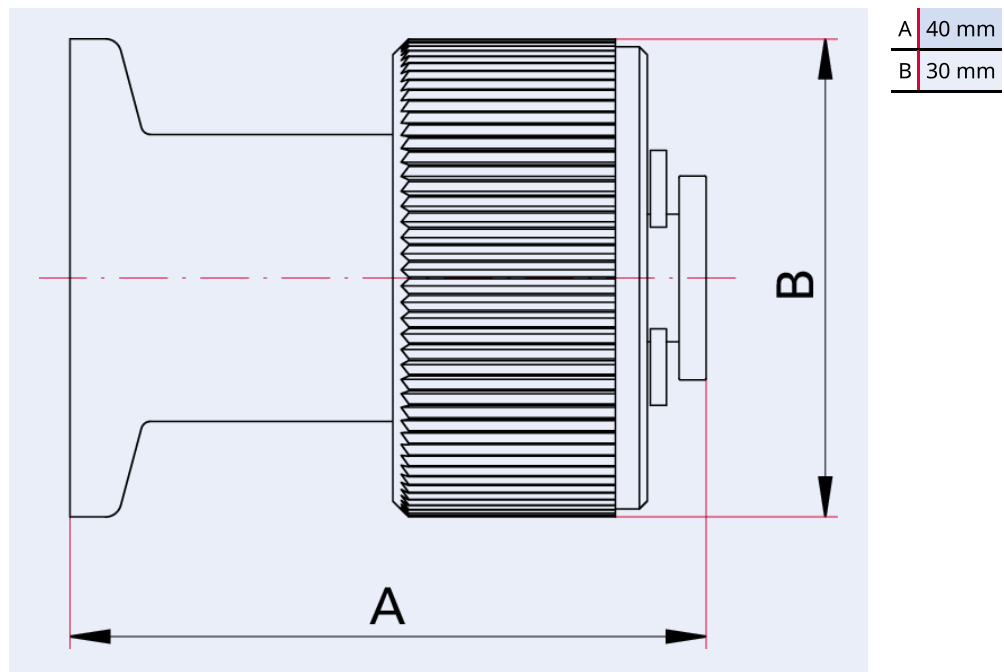


Illustration only

Venting valve, manually actuated, brass, nickel-plated, DN 10 KF

- Manually operated screw cap for venting with ambient air

Dimensions



Technical Data	Venting valve, manually actuated, brass, nickel-plated, DN 10 KF
Seal	FKM
Type	Venting valve
Temperature range	30 – 130 °C
Housing	Brass, nickel-plated
Actuator	Manual
Tightness	1 · 10 ⁻¹⁰ Pa m ³ /s 7.5 · 10 ⁻¹⁰ Torr l/s 1 · 10 ⁻⁹ mbar l/s
Connection flange	DN 10 ISO-KF
Pressure range	1 · 10 ⁻⁸ hPa – 3 · 10 ³ hPa
Temperature range max.	130 °C 266 °F 403.15 K
Temperature range min.	30 °C 22 °F 243.15 K

Order number	Venting valve, manually actuated, brass, nickel-plated, DN 10 KF
Venting valve, manually actuated, brass, nickel-plated, DN 10 KF	140VBE010

Are you looking for an optimum vacuum solution?
Talk to us:
Pfeiffer Vacuum Components & Solutions GmbH Germany
T +49 551 99963-0
info-cs@pfeiffer-vacuum.com

Or scan the barcode, to visit our web page:



<https://webportal.pfeiffer-vacuum.com/global/en/contact>



Errors and/or changes excepted. - 5/14/2025

Follow Us On Social Media
#pfeiffervacuum



www.pfeiffer-vacuum.com

PFEIFFER 