



PFEIFFER 

Fluid feedthrough, single tube

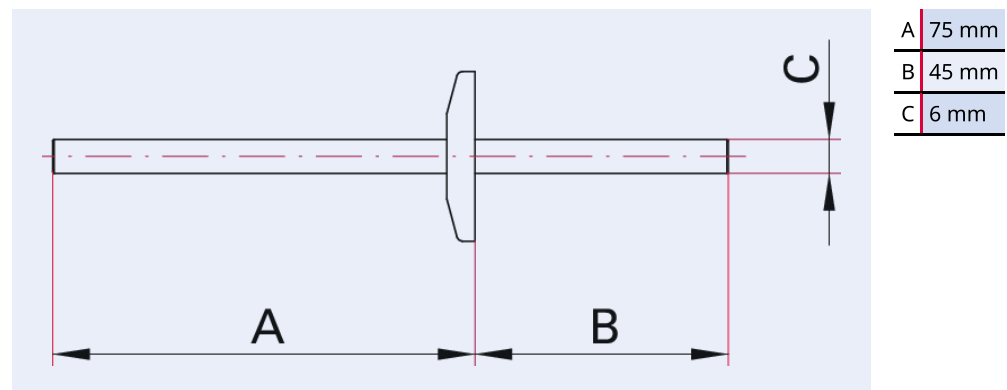


Illustration only

Fluid feedthrough, single tube, stainless steel, DN 16 ISO-KF

- Flange material: Stainless steel
- P = tube end

Dimensions



Technical Data

Fluid feedthrough, single tube, stainless steel, DN 16 ISO-KF

Materials in contact with media	Stainless steel
Temperature range (vacuum side)	196 – 300 °C
Vacuum side	P
Atmosphere side	P
Tightness	$1 \cdot 10^{-11}$ Pa m ³ /s $7.5 \cdot 10^{-11}$ Torr l/s $1 \cdot 10^{-10}$ mbar l/s
Connection flange	DN 16 ISO-KF
Pressure range	$1 \cdot 10^{-8}$ hPa – $5 \cdot 10^2$ hPa over pressure

Order number	Fluid feedthrough, single tube, stainless steel, DN 16 ISO-KF
Fluid feedthrough, single tube, stainless steel, DN 16 ISO-KF	120XFL016-PP

Are you looking for an optimum vacuum solution?
Talk to us:
Pfeiffer Vacuum Components & Solutions GmbH Germany
T +49 551 99963-0
info-cs@pfeiffer-vacuum.com

Or scan the barcode, to visit our web page:



<https://webportal.pfeiffer-vacuum.com/global/en/contact>



Errors and/or changes excepted. - 5/14/2025

Follow Us On Social Media
#pfeiffervacuum



www.pfeiffer-vacuum.com

PFEIFFER 