



**PFEIFFER** 

# Pressure relief valve

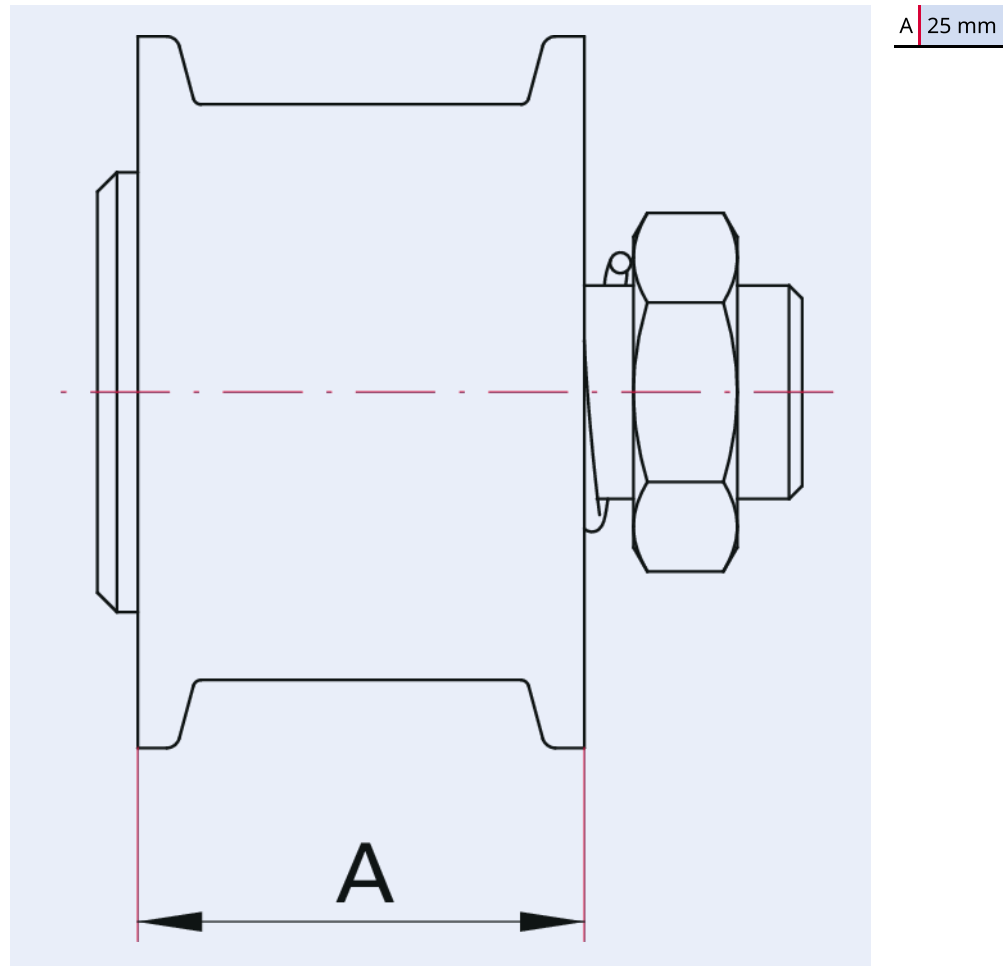


Illustration only

## Pressure relief valve, DN 16 ISO-KF

- Protects vacuum systems from over pressures
- No safety component in terms of the machinery directive 2006/42/EC
- Opening pressure with nut in middle position approx. 450 hPa
- The opening pressure can vary by more than +/- 50 hPa and shows a hysteresis.
- For valves not actuated for a period of time, initial cracking pressure may be higher than the set cracking pressure.
- Please observe the maximum flow rate.
- Tightness at 1000 hPa differential pressure
- An exhaust hose can be attached to the KF connection at the outlet side

## Dimensions



Technical Data	Pressure relief valve, DN 16 ISO-KF
Seal	FKM
Type	Pressure relief valve
Temperature range	5 – 60 °C
Housing	Stainless steel
Tightness	$1 \cdot 10^{-9}$ Pa m <sup>3</sup> /s   $7.5 \cdot 10^{-9}$ Torr l/s   $1 \cdot 10^{-8}$ mbar l/s
Connection flange	DN 16 ISO-KF
Pressure range	$1 \cdot 10^{-7}$ hPa – $5 \cdot 10^2$ hPa over pressure
Connection flange (in)	DN 16 ISO-KF
Connection flange (out)	DN 16 ISO-KF
Differential pressure	Modifiable to app. +/- 150 hPa
Temperature range max.	60 °C   140 °F   333.15 K
Temperature range min.	5 °C   41 °F   278.15 K

Order number	Pressure relief valve, DN 16 ISO-KF
Pressure relief valve, DN 16 ISO-KF	120VUS016

Are you looking for an optimum vacuum solution?  
Talk to us:  
**Pfeiffer Vacuum Components & Solutions GmbH Germany**  
**T +49 551 99963-0**  
**info-cs@pfeiffer-vacuum.com**

Or scan the barcode, to visit our web page:



<https://webportal.pfeiffer-vacuum.com/global/en/contact>



Errors and/or changes excepted. - 5/14/2025

Follow Us On Social Media  
#pfeiffervacuum



[www.pfeiffer-vacuum.com](http://www.pfeiffer-vacuum.com)

**PFEIFFER** 