



**Diaphragm valve,
manually operated,
DN 16 ISO-KF**



PFEIFFER 

Diaphragm Valve

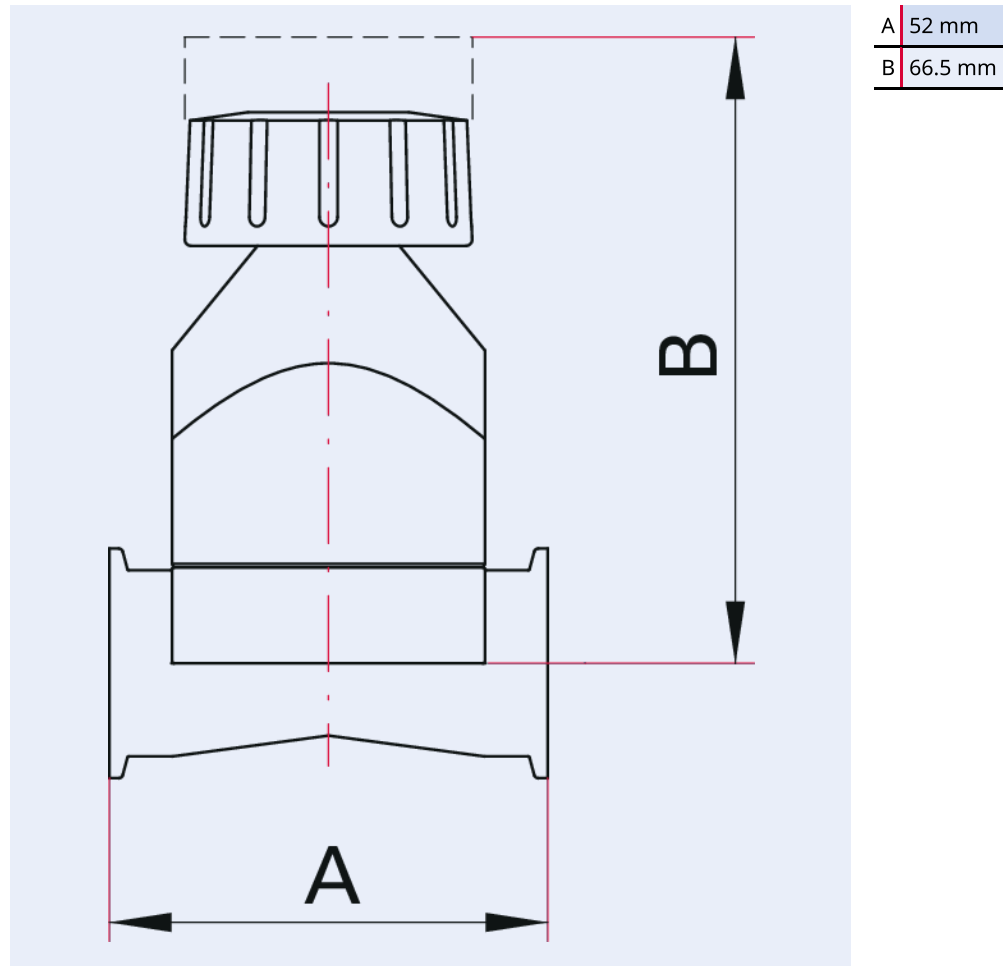


Illustration only

Diaphragm valve, manually operated, DN 16 ISO-KF

- Robust vacuum valve for venting, rough-metering and locking
- Service life: 100000 operating cycles
- The membrane seals the valve seat and the housing
- With visual indication of open and closed positions

Dimensions



Technical Data	Diaphragm valve, manually operated, DN 16 ISO-KF
Seal: Valve plate	FKM
Type	Diaphragm valve
Housing	Aluminum
Mounting orientation	Arbitrary
Actuator	Spindle
Tightness	$1 \cdot 10^{-10}$ Pa m ³ /s $7.5 \cdot 10^{-10}$ Torr l/s $1 \cdot 10^{-9}$ mbar l/s
Bakeout temperature: actuator	50 °C 122 °F 323.15 K
Conductance value with molecular flow	2 l/s
Bakeout temperature: housing	100 °C 212 °F 373.2 K
Conductance value	2 l/s
Connection flange	DN 16 ISO-KF
Pressure range	$1 \cdot 10^{-7}$ hPa – $5 \cdot 10^3$ hPa

Order number	Diaphragm valve, manually operated, DN 16 ISO-KF
Diaphragm valve, manually operated, DN 16 ISO-KF	110VME016

Are you looking for an optimum vacuum solution?
Talk to us:
Pfeiffer Vacuum Components & Solutions GmbH Germany
T +49 551 99963-0
info-cs@pfeiffer-vacuum.com

Or scan the barcode, to visit our web page:



<https://webportal.pfeiffer-vacuum.com/global/en/contact>



Errors and/or changes excepted. - 5/14/2025

Follow Us On Social Media
#pfeiffervacuum



www.pfeiffer-vacuum.com

PFEIFFER 